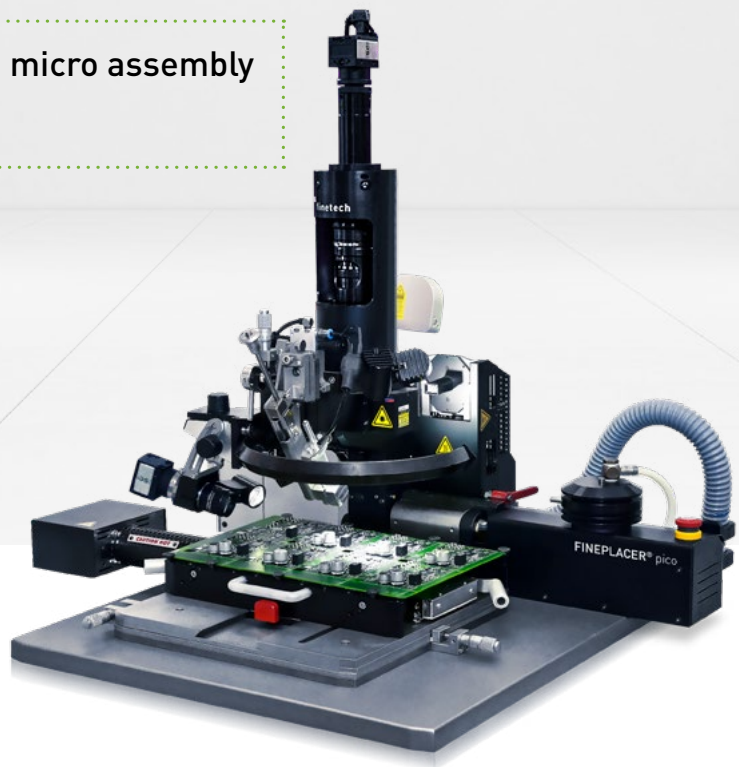


FINEPLACER® pico rs

Hot Air SMD Rework Station

Precision and Flexibility for Advanced Rework

- » One system for rework and micro assembly
- » Full hot air rework system



Placement accuracy better 5 μ m

.....

Industry-leading thermal management

.....

In-situ process observation in HD

.....

Unique FINEPLACER® working principle

.....

Superior optical resolution

.....

Data/media logging and reporting function

.....

Features

Overlay vision alignment system (VAS) with fixed beam splitter	Precise visual alignment of chip and substrate
3-color LED illumination	Excellent contrast values with different materials for best visibility and recognition
Full process access and easy programming	Flexible and intuitive process composition allows implementing complex applications with little training effort
Synchronized control of all process related parameters	Maximum process control and reproducibility
Software controlled top heater calibration	Ensures high reflow profile reproducibility with low maintenance. Profiles can be shared between machines, same process results are guaranteed.
Modular machine platform allows in-field retrofitting during entire service life	Fast and easy upgrade of the rework station to meet new application & technology requirements
Individual configurations with process modules	Machine solutions tailored to your application requirements
Fully manual or semi-automatic machine versions	Get the rework station that suits your application requirements
Force controlled component handling	Allows safe handling of small and sensitive components (e.g. 008004)

Benefits

Technologies

- » Surface Mount Technologie (SMT)
- » Through Hole Technologie (THT)
- » Pin in Paste (PiP)

Processes

- » Component removal / Desoldering
- » Contactless site cleaning / Solder removal
- » Reballing / Single ball reballing
- » Paste printing (component, PCB)
- » Dipping
- » Dispensing
- » Soldering

Applications

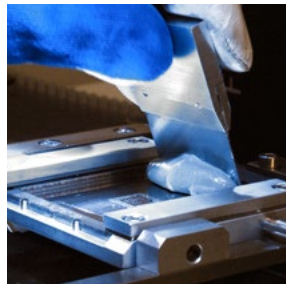
- » BGA, CSP, QFN, DFN, QFP, PGA, SOT etc.
- » Mini BGA and other miniaturized components
- » Small passives down to 008004
- » LED and Mini LED arrays
- » Package on Package (PoP)
- » Daughter boards & Sub assemblies
- » RF shields & RF frames
- » Connectors & Sockets
- » Underfilled and coated components
- » Rework on FR4, flex, glass, ceramic or aluminium carrier

Modules & Options

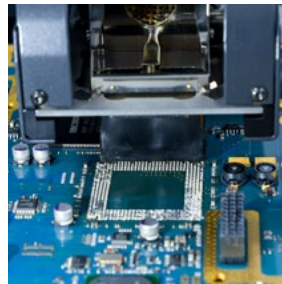
- » Bar Code Reader (SmartIdent)
- » Chip Heating Module
- » Component Presentation
- » Direct Component Printing Module
- » Dispense Module
- » Hot Gas Bottom Heating Module
- » Manual Dipping Unit
- » PCB Support
- » Process Gas Switching Module
- » Process Start Sensor
- » Process Video Module
- » Reballing Module
- » RGW - Illumination
- » Solder Removal Module
- » Split Field Optics
- » Substrate Heating Module
- » Substrate Support
- » Target Finder
- » Top Heating Module (Hot Gas)
- » Zoom-Optics^{plus}



Process Video Module



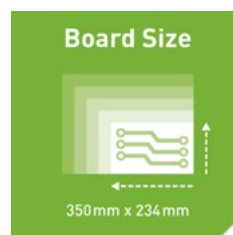
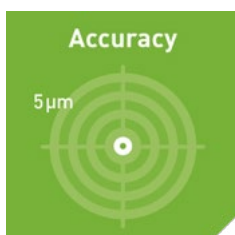
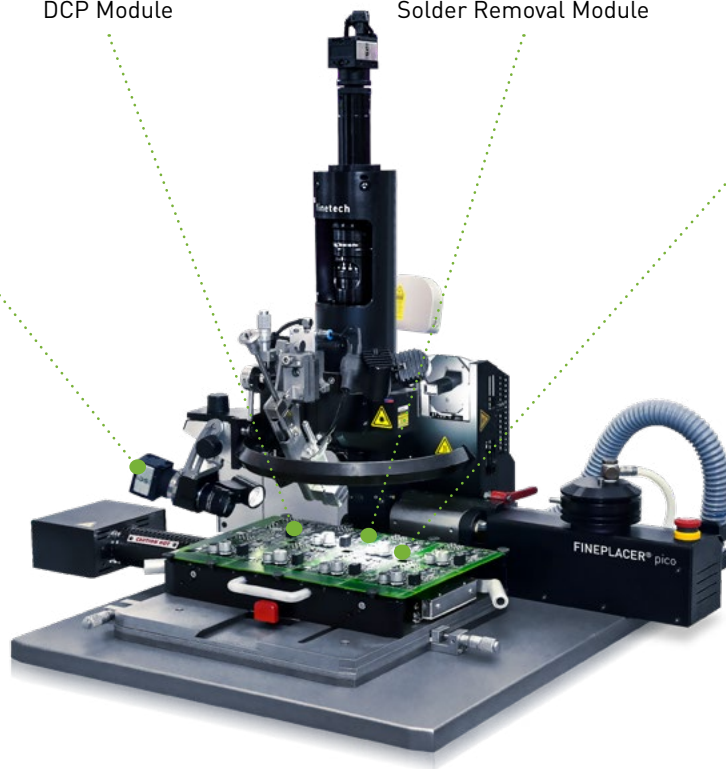
DCP Module



Solder Removal Module



Top Heating Module

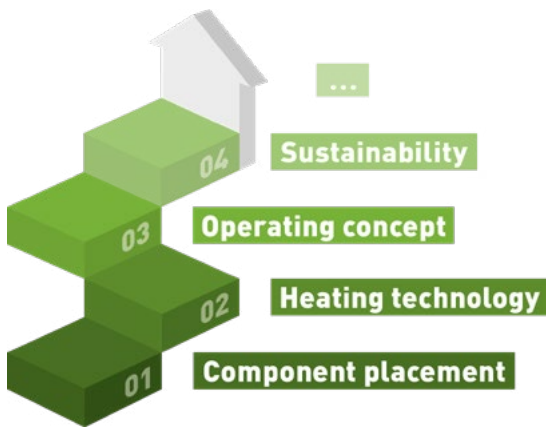


Modularity Pays Off

Due to a large number of available process and function modules, the FINEPLACER® supports a particularly wide range of applications. When starting out, this flexibility enables configurations tailored exactly to the current needs. Moreover, the system can be adapted to new tasks over its entire service life, which is an integral part of the machine concept. Modules can be easily combined or exchanged, which increases the flexibility of the system and safeguards the investment in the long term.



Which Rework System Fits Your Requirements?



Are you a production or project manager of an OEM company or EMS service provider faced with the task of selecting a professional SMD rework system? To find the solution that fits your needs, there are a number of questions that should be addressed first. Make sure to assess in advance which type of rework system on the market is ideally suited to your production or project requirements. This checklist, developed together with rework customers from different industries, outlines considerations for selecting your future system.

[Download the paper here:](#)



Customer Feedback

"We have been partners with Finetech for over 20 years now and they have always been open to our needs. The support they provide is immeasurable – their engineering team is very accessible and everyone is well connected and deeply involved with each project. The quality we get is always at the highest level – from the first to the 2,000th board."



Nafi Pajaziti
CEO, BMK Electronic Services

